

MiniMulti!

CtS & CtP System Tailored to Your Application



BASED ON INNOVATION.

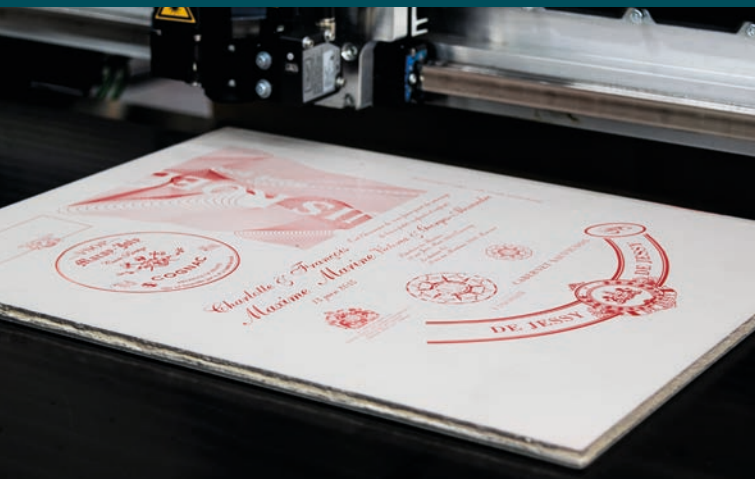
luscher
Technologies

Advantages of the Patented Lüscher Laser Diode Technology

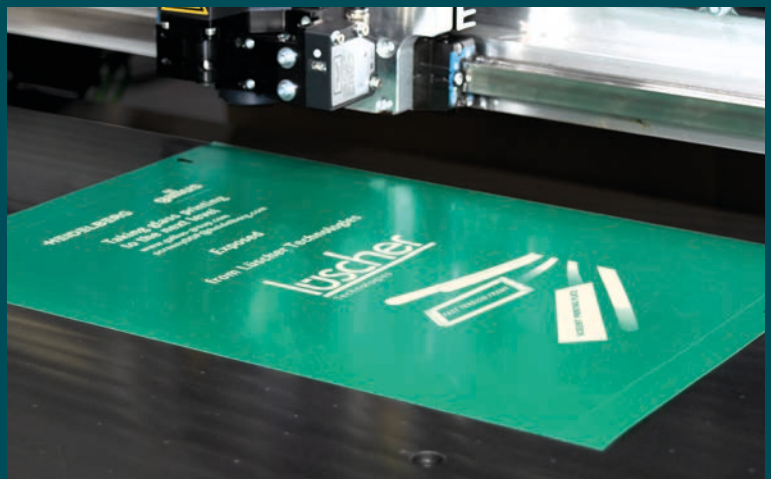
- PROVEN AND TRUSTED TECHNOLOGY MADE IN SWITZERLAND
- MAINTENANCE-FREE FIBER-OPTIC COUPLED LASER DIODE TECHNOLOGY
- FULLY AUTOMATIC CALIBRATION OF LASER DIODES
- ULTRA-LONG LIFESPAN OF THE LASER DIODES WITH +20'000 IMAGING HOURS
- UPGRADEABLE- ADDITIONAL LASER DIODES CAN BE ADDED AT ANY TIME FOR FASTER IMAGING SPEED
- HIGH-ENERGY LASER DIODES FOR MAXIMUM ENERGY OUTPUT, NO ACTIVE COOLING SYSTEM REQUIRED
- NO CONSUMABLES
- OPERATES VIRTUALLY MAINTENANCE-FREE
- LOW ENERGY CONSUMPTION, LOWEST COST OF OWNERSHIP

Advantages of the MiniMulti!

- FLATBED SYSTEM FOR EASY HANDLING
- IMAGING AREA UP TO 662 X 530 MM
- CUSTOMIZED TO YOUR APPLICATION, SUCH AS FLEXO, LETTERPRESS, FLAT SCREEN, ROTARY SCREEN, PAD PRINTING OR EMBOSSED
- CUSTOM-BUILT REGISTER SYSTEM
- OPTIMAL PRICE-PERFORMANCE RATIO



Embossing Cliché



Rotary Screen & Flat Screen by Gallus

Technical Specifications of the MiniMulti!

MachineType	Laser Type	Number of Laser Diodes	Resolutions
MiniMulti! Flexo	TH, 980 nm	16 / 32	2'540 & 5'080 dpi
MiniMulti! Letterpress	TH, 980 nm	16 / 32	2'540 & 5'080 dpi
MiniMulti! Flat Screen	UV, 405 nm	16 / 32	2'540 or 2'540 & 5'080 dpi (optional)
MiniMulti! Rotary Screen	UV, 405 nm	16 / 32	2'540 dpi
MiniMulti! Pad Printing	TH, 980 nm / UV, 405 nm	16 / 32	2'540 & 5'080 dpi
MiniMulti! Embossing	UV, 405 nm	16 / 32	2'540 dpi

General Information of the MiniMulti!

Feature	Specification
Max. Imaging Area (L x W)	662 x 530 mm (26.1 x 20.9 inch)
Max. Frame Size (L x W)	760 x 870 mm (29.9 x 34.3 inch)
Machine Dimensions (L x W x H)	1'435 x 1'325 x 1'300 mm (56.5 x 52.2 x 51.2 inch)
Weight	500 kg (1'102 lb)
Power Supply	230V / 50 - 60 Hz / 16 A
Power Consumption	approx. 0.4 kW / approx. 0.7 kW with extraction system
Ambient Conditions	40 - 65 % humidity at 18 - 25 °C (64.4 - 77 °F)
Room Conditions	yellow light*, vibration-free floor

*only for Flat Screen, Rotary Screen, Pad Printing and Embossing

Flatbed Computer-to-Screen (CtS) or Computer-to-Plate (CtP) System

Lüscher's Laser Diode Technology

The fiber-coupled laser diodes operate in different wavelengths and are characterized by an ultra-long service life of +20'000 imaging hours. They are completely maintenance-free, no need for an active cooling system.

Fully Automatic Calibration

Prior to each imaging, the system checks the default settings of the laser diodes in relation to the emulsion to be imaged and automatically checks and calibrates the laser diode if necessary. This guarantees consistent quality and eliminates image errors.

Lowest Energy Consumption

Lüscher's patented laser diode technology ensures minimal power usage of approx. 0.7 kW, depending on laser type, reducing costs and providing a lower total cost of ownership. This promotes environmentally friendly production for customers.

Virtually Maintenance-free

MiniMulti! does not require any consumables such as MH lamps, UV lamps, LEDs or DMD chips.

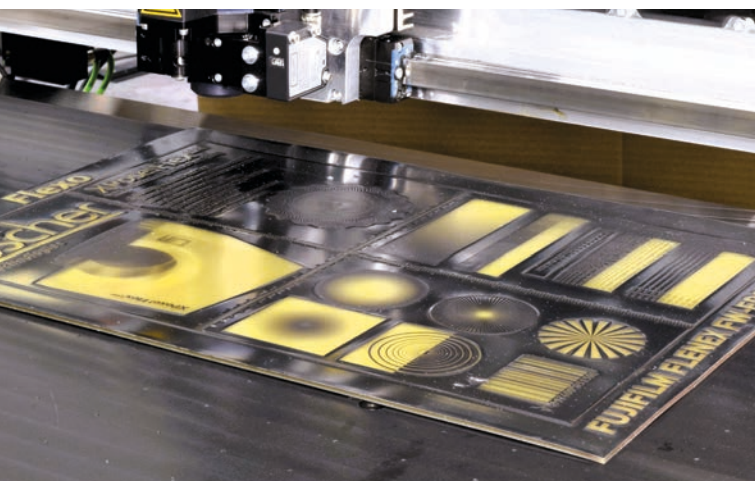
Lüscher's maintenance software guides the operator through the simple maintenance tasks and guarantees high reliability. MiniMulti! is equipped with a port for Remote Support Service, which can be directly linked to our technical support via the internet.

Unique Imaging System Tailored to Your Application

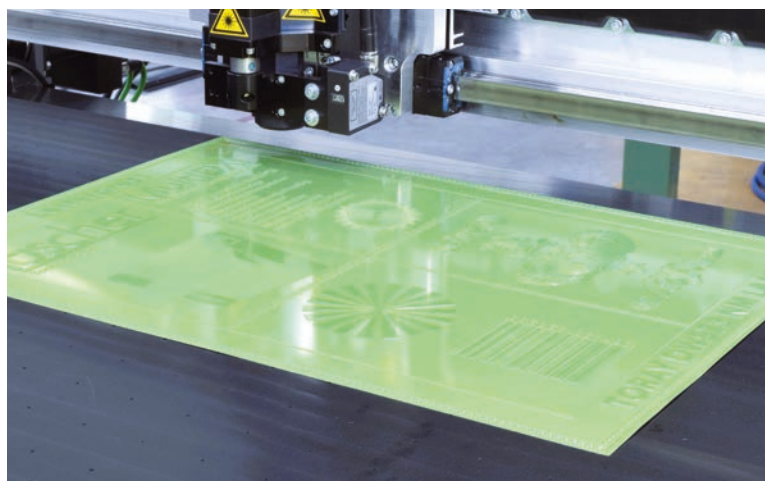
Depending on machine configuration, the MiniMulti! can image printing forms such as flexo plates, letterpress plates, pad printing plates, embossing clichés, flat screens, as well as rotary screens, such as Screeny® by Gallus, TecScreen® by Kocher+Beck or RotaPlate® by SPGPrints.

Custom-built Register System

The flatbed layout of MiniMulti! allows the integration of custom-built register systems for perfect alignment of the image on the printing form. As a result, the setup time in the printing press is substantially reduced, which leads to significant savings in terms of material and cost.



Flexo Printing Plate



Letterpress Printing Plate

Applications

Flexo

The MiniMulti! Flexo is a compact imaging system for label and narrow web printers using a plate size of 635 x 508 mm (25 x 20 inch). The MiniMulti! Flexo comes with two different resolutions: 2'540 dpi and full HD 5'080 dpi.

Letterpress

The MiniMulti! Letterpress is a compact imaging system for label and dry-offset printers using a max plate size of 650 x 530 mm (25.6 x 20.9 inch). The flatbed layout allows for the integration of custom-built register systems for perfect registration and multiple imaging simultaneously.

Embossing Clichés

The MiniMulti! Embossing is a compact imaging system for imaging photo engraving plates used for foiling, embossing, micro-etching, etc. All common magnesium, copper, and zinc plates with photoresist, up to the size of 650 x 500 mm (26 x 20 inch), can easily be imaged. The MiniMulti! Embossing comes with a 2'540 dpi resolution to ensure that the plates are always imaged in the highest quality.

Flat Screen Printing

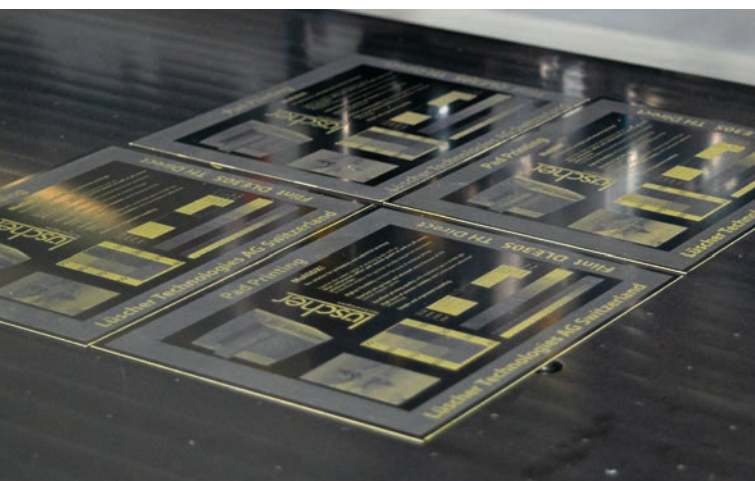
The MiniMulti! Flat Screen is a compact imaging system for screens up to 760 x 870 mm (29.9 x 34.3 inch). Any common steel or polyester mesh can be processed, and the system has enough power capacity to cure thick emulsion layers and capillary films. Custom-made vacuum tables and register systems for any screen size are available. The MiniMulti! Flat Screen comes as standard with a 2'540 dpi resolution, and for higher demands, it is optionally available with both 2'540 dpi and 5'080 dpi resolutions. This allows you to always get the best quality and performance ratio.

Rotary Screen Printing

The MiniMulti! Rotary Screen is a compact imaging system for rotary screens up to 662 x 530 mm (26.1 x 20.9 inch). Rotary screens, such as Screeny® by Gallus, TecScreen® by Kocher+Beck, or RotaPlate® by SPGPrints, are perfectly registered on the special vacuum table during imaging.

Pad Printing

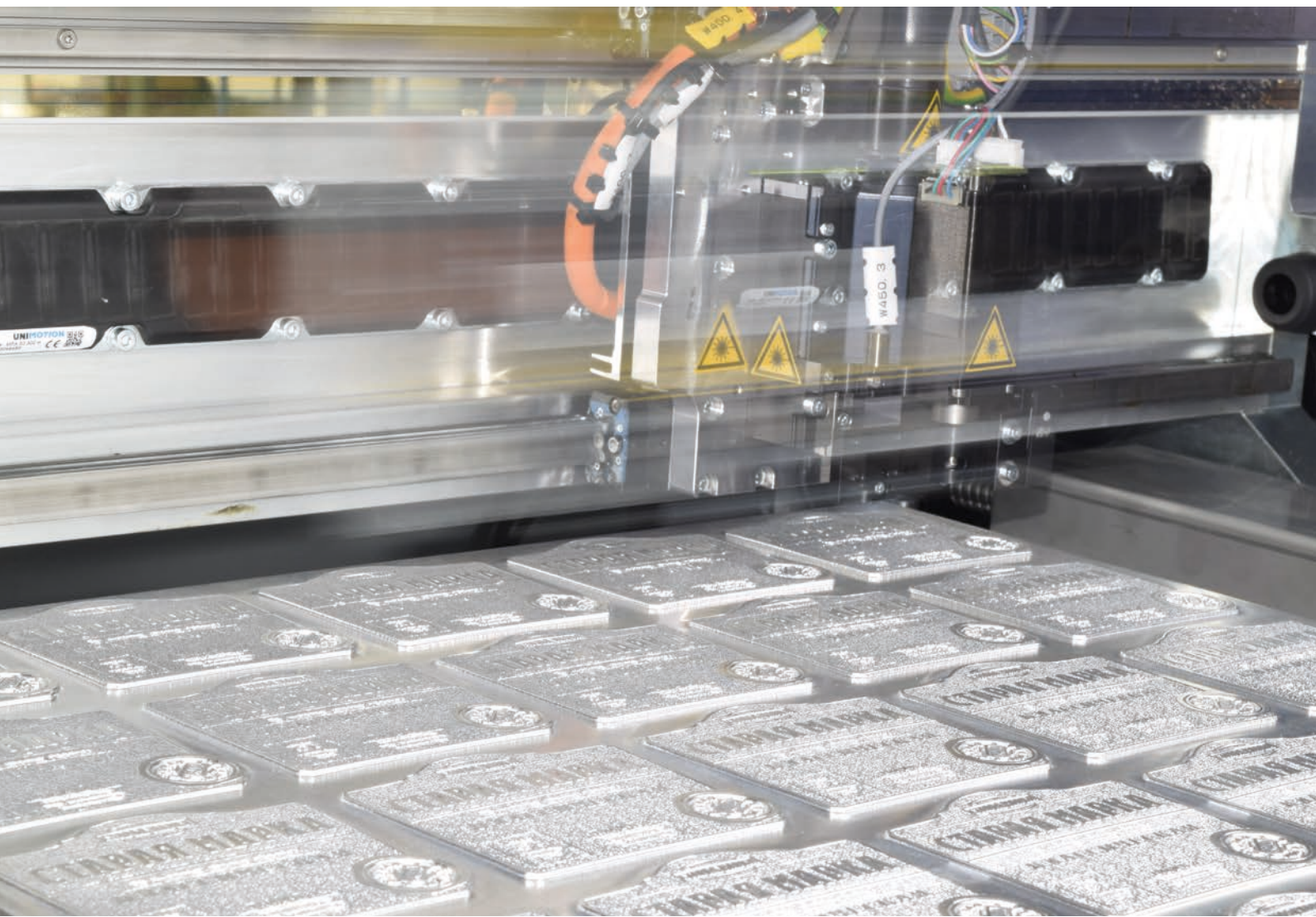
The MiniMulti! Pad Printing is a compact imaging system for plate sizes up to 662 x 530 mm (26.1 x 20.9 inch). The flatbed table layout allows for the integration of custom-built register systems for perfect registration and multiple imaging simultaneously. Depending on machine configuration, the MiniMulti! Pad Printing can image direct engravable pad printing plates as well as digital polymer plates or steel clichés. The MiniMulti! Pad Printing comes with two different resolutions: 2'540 dpi and full HD 5'080 dpi.



Pad Printing Plate



Flat Screen



Lüscher Technologies AG

Industriestrasse 17
4665 Oftringen
Switzerland

Tel.: +41 62 767 76 76
contact@luescher.com
www.luescher.com



A HELIOGRAPH HOLDING COMPANY