

Digicon Series 3



Unrivalled finishing
for the wider web

330, 430 & 540mm



Contact us: +44 1262 671 138 | info@abgint.com

abgint.com

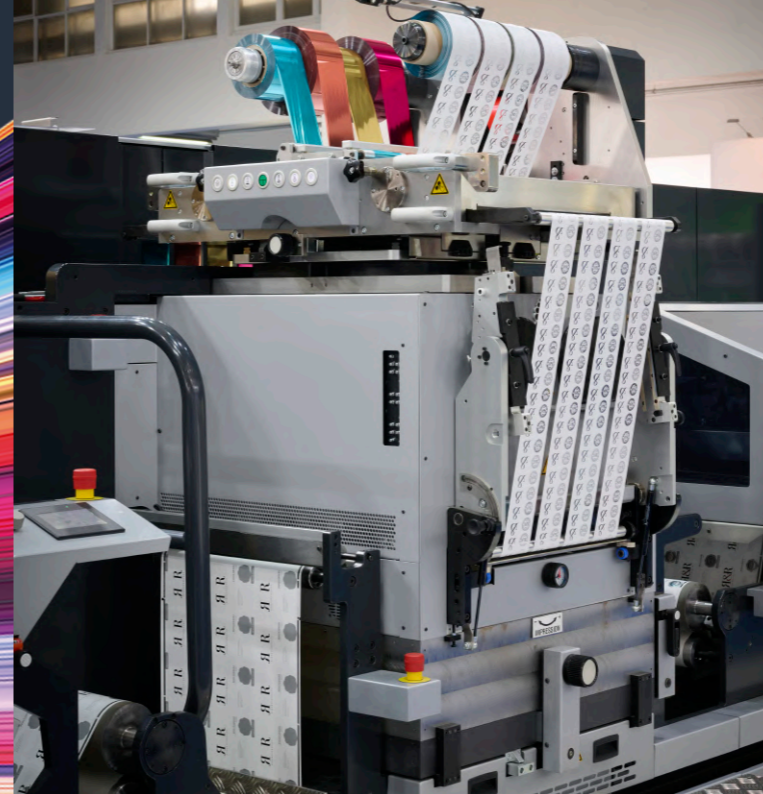
Introducing Digicon Series 3 **540**

Our flagship Digicon Series 3 is now available in wider web widths including 430 and 540mm wide.

Utilise the same market leading solution for your wider web applications, without compromising on quality or performance.

There's a whole host of modules available including **ABG's 50t Big Foot** for high quality hot foil and embossing.

The DS3 430 & 540 are only available in left to right configurations.



High Quality Finishing

Convert wider web widths with ABG's flagship finishing solution

Fully Customisable

Configure your Digicon to suit your production requirements with a wide range of modules available across all web widths, including our **patented Fast Track die**

Increased Speeds

Maximise efficiencies with increased speeds, now up to 180m/min with our Fast Track die

Automation Modules

Reduce machine set up times with modules like **AutoSlit**, automatically setting your knives ready for production

Contact us: info@abgint.com



Digicon Module Options

| Category | Description | 350 | 430 | 540 |
|---------------|---|-----|-----|-----|
| Unwind/infeed | Ø1000 Dual Frame Unwind Module | ✓ | ✓ | ✓ |
| | Ø1250 Dual Frame Unwind Module | ✓ | ✓ | ✓ |
| | Ø1000 Cantilevered Unwind Module | ✓ | ✓ | ✓ |
| | Interface Module - ASU/NSU Module | ✓ | ✓ | ✓ |
| | Durst Interface | ✓ | ✓ | ✓ |
| | Domino Interface | ✓ | ✓ | ✓ |
| Flexo | Rotary Flexo (Converter) Module | ✗ | ✗ | ✗ |
| | Sleeve Flexo Module | ✓ | ✓ | ✓ |
| | Digicon Flexo Module | ✓ | ✓ | ✗ |
| Laminate | Self-Wound Laminate - Rail Mounted | ✓ | ✓ | ✓ |
| | Carrier Lamination - Rail Mounted | ✓ | ✓ | ✓ |
| Turnbar | Turn Bar Module - Air Assist | ✗ | ✗ | ✗ |
| | Turn Bar Module - Whisper Quiet | ✗ | ✗ | ✗ |
| | Turn Bar - Rail Mounted - Air Assist | ✓ | ✓ | ✓ |
| | Turn Bar - Rail Mounted - Whisper Quiet | ✓ | ✓ | ✓ |
| Die | Single Die Module | ✗ | ✗ | ✗ |
| | Die, Matrix Strip Module | ✗ | ✗ | ✗ |
| | Quick Change Die Module | ✓ | ✓ | ✓ |
| | Fast Track Module | ✓ | ✓ | ✓ |
| | Semi-Rotary Die Module | ✓ | ✓ | ✓ |
| | Stripping Module | ✓ | ✓ | ✓ |
| Sheeter | Sheeter Module | ✓ | ✓ | ✓ |

| Category | Description | 350 | 430 | 540 |
|------------------|--------------------------------------|-----|-----|-----|
| DigiLase | Laser Module | ✓ | ✗ | ✗ |
| Ecoleaf | Actega Ecoleaf Module | ✓ | ✓ | ✓ |
| Foil | Semi-Rotary Embossing Module | ✓ | ✓ | ✓ |
| | Semi-Rotary Hot Foil Module | ✓ | ✓ | ✓ |
| | 25t Flat Bed Hot Foil | ✓ | ✗ | ✗ |
| | 50t Big Foot Flat Bed Hot Foil | ✓ | ✓ | ✓ |
| Metallic doming | Metallic Doming Module | ✓ | ✓ | ✗ |
| Crossover module | Crossover (Coupon) Module | ✓ | ✓ | ✓ |
| Stripping | New Automatic Matrix Stripping (AMS) | ✓ | ✓ | ✓ |
| Screen | Stork Rotary Screen Print Module | ✓ | ✓ | ✓ |
| | High Speed Flat Screen Print Module | ✓ | ✓ | ✗ |
| DigiJet | DigiJet 2 Bar Module | ✓ | ✗ | ✗ |
| | DigiJet 1 Bar Module | ✓ | ✗ | ✗ |
| Inspection | Inspection Module | ✓ | ✓ | ✓ |
| Leader Tail | Leader Tail Module | ✓ | ✓ | ✓ |
| Rewind | Stripping Module | ✓ | ✓ | ✓ |
| | Slitting Module | ✓ | ✓ | ✓ |
| | Rewind Module | ✓ | ✓ | ✓ |
| | Rewind Module inc WREW | ✓ | ✓ | ✓ |
| | Dual Frame Rewind | ✗ | ✗ | ✗ |
| | Pre-Turret (Gmbh/Vectra) Module | ✓ | ✓ | ✓ |
| | Semi-Automatic Turret (Gmbh) | ✓ | ✓ | ✓ |
| | Quick Switch (Basic) Turret | ✓ | ✓ | ✓ |

Enhancing Efficiencies



We've purchased the 540 Digicon to support growing capacity needs and to propel production upwards.

It runs alongside our 510mm Durst press and has proved to be a reliable, well-integrated addition to the factory, plus it also looks good!

The machine is built to last and in the 17 years we've been using ABG equipment, we've had only a few days of downtime.

Importantly, as is common in our industry, there is a real struggle to recruit, and the automation helps us with these ongoing labour challenges.

Øyvind Tørvi
Factory Manager
Digital Etikett, Norway



Digicon Series 3 ABG's Flagship Solution



Thousands of
installations
worldwide



Always
developing
innovative
modules



Market
leading
finishing
solution



Adding
value
to your
print



Increases
production
efficiencies

Enjoy the security of ABG



70+ years of print finishing expertise



Modular approach which means each build can be bespoke to you



Built with connectivity, automation, and ease of use



Designed, manufactured, and serviced by ABG



Retrofittable options – allowing you to future proof your business

Head Office

Lancaster Road, Carnaby Industrial Estate, Bridlington, YO15 3QY, UK

Contact us: +44 1262 671 138 | info@abgint.com

abgint.com