

# JetScreen! CS

Ultra-Compact Computer-to-Screen System with  
UV Laser Diodes for High-End Screen Production



BASED ON INNOVATION.

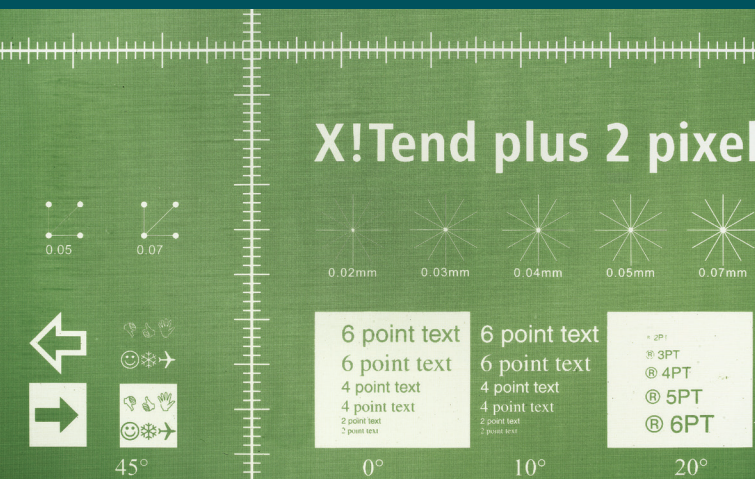
**lüscher**  
Technologies

# Advantages of the Patented Lüscher Laser Diode Technology

- PROVEN AND TRUSTED TECHNOLOGY MADE IN SWITZERLAND
- MAINTENANCE-FREE FIBER-OPTIC COUPLED LASER DIODE TECHNOLOGY
- FULLY AUTOMATIC CALIBRATION OF LASER DIODES
- ULTRA-LONG LIFESPAN OF THE LASER DIODES WITH +20'000 IMAGING HOURS
- UPGRADEABLE- ADDITIONAL LASER DIODES CAN BE ADDED AT ANY TIME FOR FASTER IMAGING SPEED
- HIGH-ENERGY LASER DIODES FOR MAXIMUM ENERGY OUTPUT, NO ACTIVE COOLING SYSTEM REQUIRED
- NO CONSUMABLES
- OPERATES VIRTUALLY MAINTENANCE-FREE
- LOW ENERGY CONSUMPTION, LOWEST COST OF OWNERSHIP

# Advantages of the JetScreen! CS

- LÜSCHER TRIOPTIC! SYSTEM INCLUDES 3 DIFFERENT RESOLUTIONS FROM 635 DPI UPTO 10'160 DPI DEPENDING ON MACHINE TYPE
- DYNAMIC AUTOFOCUS
- HIGHEST ENERGY OUTPUT ON SCREEN. STANDARD DIAZO-PHOTOPLYMER („DUAL-CURE“) EMULSIONS AND CAPILLARY FILMS CAN EASILY BE IMAGED AND FULLY CURED
- NO CONSUMABLES SUCH AS WAX / INK / MH LAMPS/ UV LAMPS / LEDS OR DMD CHIPS
- INTEGRATION INTO AN AUTOMATIC INLINE SYSTEM POSSIBLE



# Technical Specifications of the JetScreen! CS

MachineType	Max. Frame Size (L x W)	Max. Imaging Area (L x W)	Weight
JetScreen! CS (front loading)	1'300 x 1'400 mm (51.2 x 55.1 inch)	1'300 x 1'360 mm (51.2 x 53.5 inch)	1'800 kg (3'968 lb)
JetScreen! CS Inline (side loading & front loading)	1'300 x 1'450 mm (51.2 x 57.1 inch)	1'300 x 1'410 mm (51.2 x 55.5 inch)	1'850 kg (4'078 lb)

# General Information of the JetScreen! CS

Feature	Specification
Machine Dimensions (L x W x H)	2'495 x 1'300 x 2'115 mm (98.2 x 51.2 x 83.3 inch)
Trioptic! resolution JetScreen! CS <sup>Basic</sup>	1'270 dpi (switchable to 635 / 2'540 dpi)
Trioptic! resolution JetScreen! CS	2'540 dpi (switchable to 1'270 / 5'080 dpi)
Trioptic! resolution JetScreen! CS <sup>Plus</sup>	5'080 dpi (switchable to 2'540 / 10'160 dpi)
Lüscher Loading / Unloading System	Upon request
Integration into an automatic inline system	Upon request
LaserType	UV, 405 nm
Number of Laser Diodes	32 / 48 / 64 / 80 / 96 / 112 / 128
Power Supply	3 x 400V + N + PE / 50 - 60 Hz / 32 A
Air Supply	6 - 10 bar, 10 l/min
Power Consumption	approx. 2 kW
Ambient Conditions	40 - 65 % humidity at 18 - 25 °C (64.4 - 77 °F)
Room Conditions	yellow light, vibration-free floor



# Built for Highest Requirements in Screen Imaging

## Lüscher's Laser Diode Technology

The fiber-coupled laser diodes operate in the 405 nm range and are characterized by an ultra-long service life of +20'000 imaging hours. They are completely maintenance-free, no need for an active cooling system.

## Fully Automatic Calibration

Prior to each imaging, the system checks the default settings of the laser diodes in relation to the emulsion to be imaged and automatically checks and calibrates the laser diode if necessary. This guarantees consistent quality and eliminates image errors.

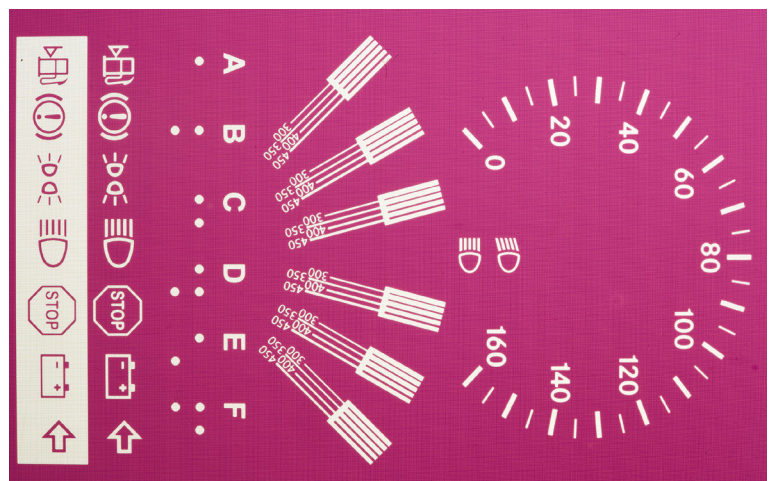
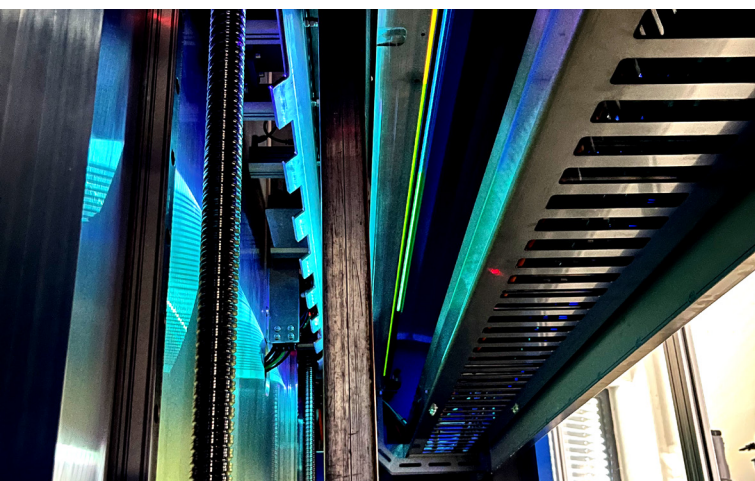
### Lowest Energy Consumption

Lüscher's patented laser diode technology ensures minimal power usage of approx. 2 kW, reducing costs and providing a lower total cost of ownership. This promotes environmentally friendly production for customers.

## Virtually Maintenance-free

JetScreen! CS does not require any consumables such as Wax, Ink, MH lamps, UV lamps, LEDs or DMD chips.

Lüscher's maintenance software guides the operator through the simple maintenance tasks and guarantees high reliability. JetScreen! CS is equipped with a port for Remote Support Service, which can be directly linked to our technical support via the internet.





### High Performance Reserves

The laser diodes have high power capacity, allowing their energy to be adapted to the requirements of any emulsion. There is no need for high-speed CtS emulsions; any standard emulsion or thick layer can be imaged and cured by JetScreen! CS.

### Lüscher's Trioptic!-System

Depending on the specific quality requirements, the desired resolution can be selected at the touch of a button. Three different resolutions are available for the JetScreen! CS to ensure optimal quality and speed range.

### Inline Processing

As an option, the JetScreen! CS can be integrated into an automatic inline system, for example, with a loading magazine, developer and unloading magazine.

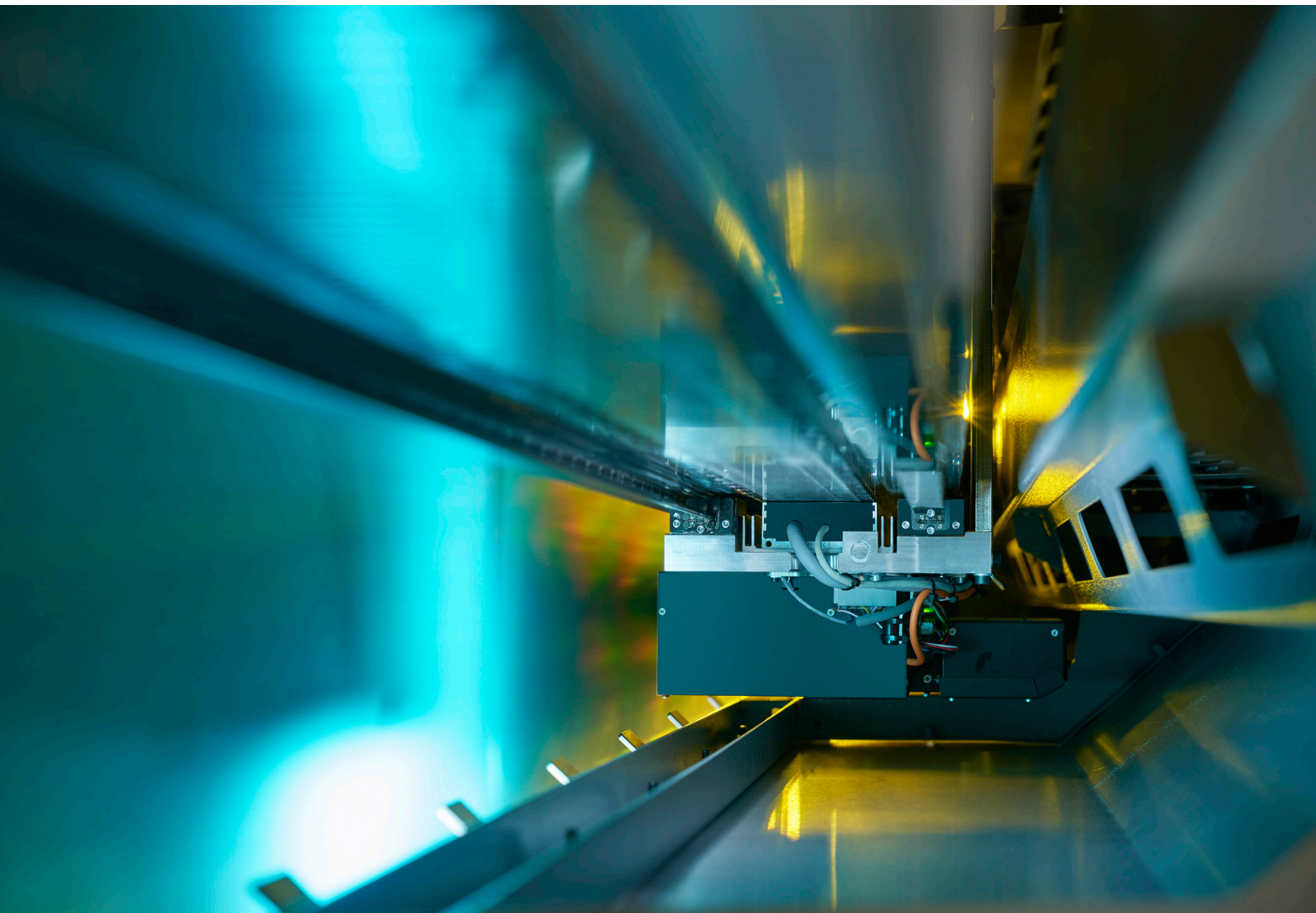
### Highest Imaging Quality

The optional X!Tend software pushes the physical limits of screen printing: X!Tend allows for the imaging of finer graphic elements compared to any standard imaging technique.

### Lüscher's Loading/Unloading System

The standard manual front loading of the screen can be complemented by the automatic inline Lüscher loading/unloading unit.





**Lüschert Technologies AG**

Industriestrasse 17  
4665 Oftringen  
Switzerland

Tel.: +41 62 767 76 76  
[contact@luescher.com](mailto:contact@luescher.com)  
[www.luescher.com](http://www.luescher.com)



A HELIOGRAPH HOLDING COMPANY